

RESIDENTIAL SOUND INSULATION PROGRAM



Residential Sound Insulation Program Update Meeting

Neighborhood Council #1

Meadowlark Elementary School
November 10, 2009

Neighborhood Council #2

West Elementary School
November 11, 2009

RESIDENTIAL SOUND INSULATION PROGRAM



- Welcome
- Introductions
 - Great Falls Airport
 - Stelling Engineers
 - Specialists:
 - *CSDA*
 - *Noise specialists*
 - *Architects*
 - *others*

Great Falls Airport
Cynthia Schultz
Kent Funyak

Stelling Engineers
Kathy Harris
Mike Beckhoff
Mitch Stelling

Specialists

CSDA Architects
Bob Valerio
Carol Gustavson
CTA Architects
Other

RESIDENTIAL SOUND INSULATION PROGRAM



Agenda

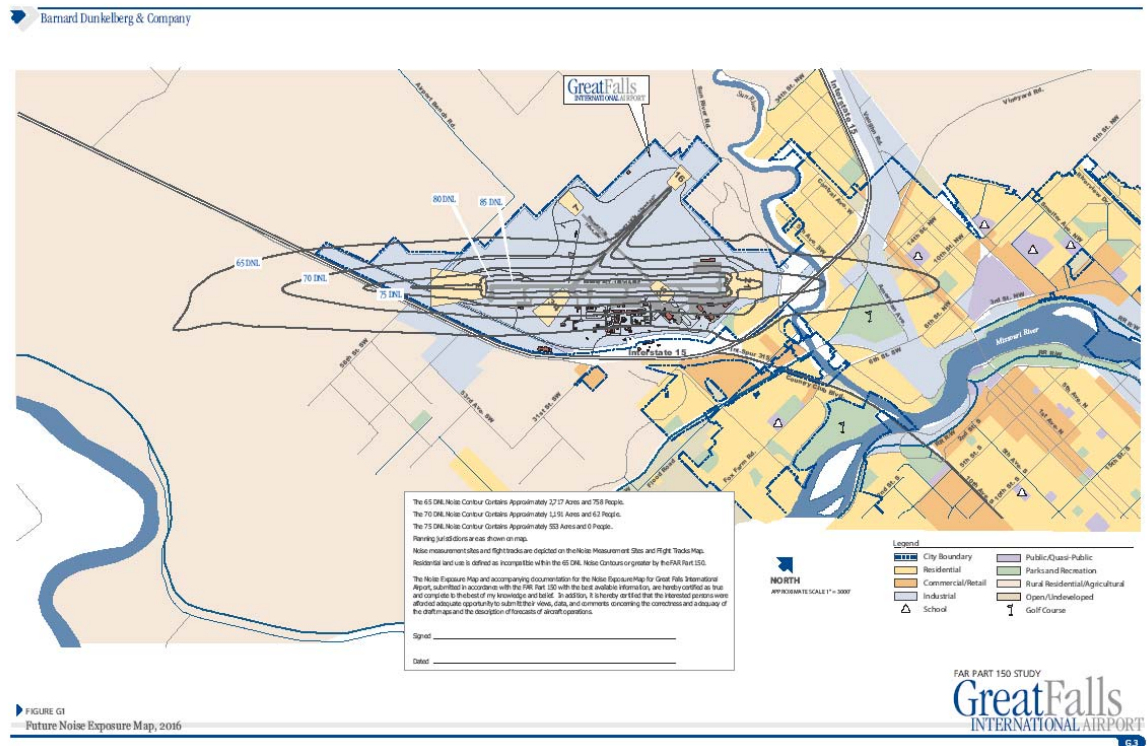
- Introductions
- RSIP Program Update
- RSIP Information
- Questions

RESIDENTIAL SOUND INSULATION PROGRAM



Program Update:

- History (Part 150 Study)
- Boundary
- Noise Levels



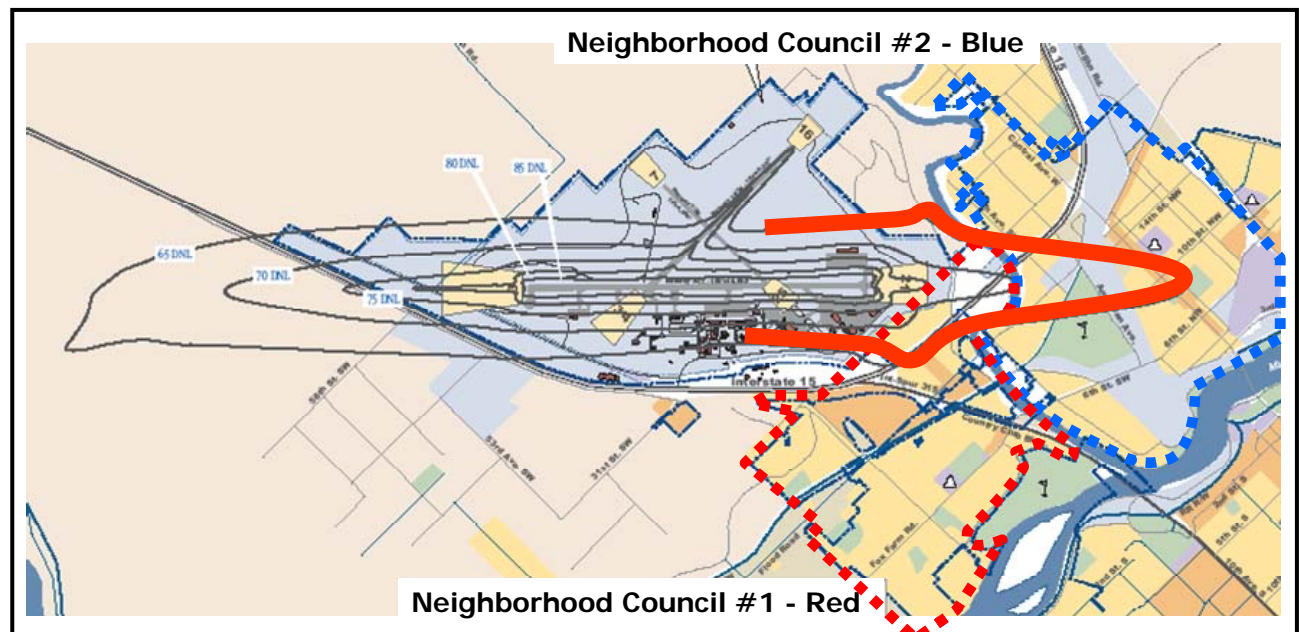
RESIDENTIAL SOUND INSULATION PROGRAM



Program Update: **Boundary**

Noise Remedy Boundary

- Within Boundary, Homes are CONSIDERED for Sound Insulation Treatment



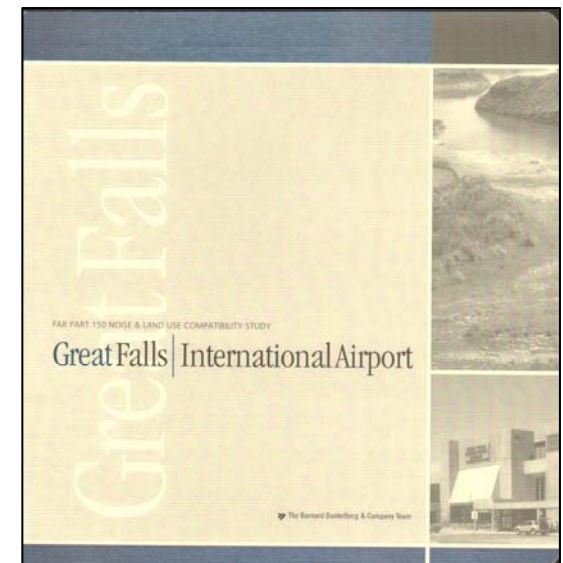
RESIDENTIAL SOUND INSULATION PROGRAM



Program Update: History

FAR Part 150 Noise & Land Use Capability Study

- Approved 2007
 - Compatible Land Uses
 - Noise Exposure Maps
- Estimates many things including aircraft noise impacts to homes & defines a boundary to be considered for treating homes
- Began with 2001 aircraft operations, then updated to 2005
- Computer model projects (estimates) noise based upon:
 - Type of aircraft (fleet mix) & newer engines (quieter)
 - Number and time of aircraft (landings)
 - Atmospheric (wind)
 - Locations of residences and topography and flight tracks



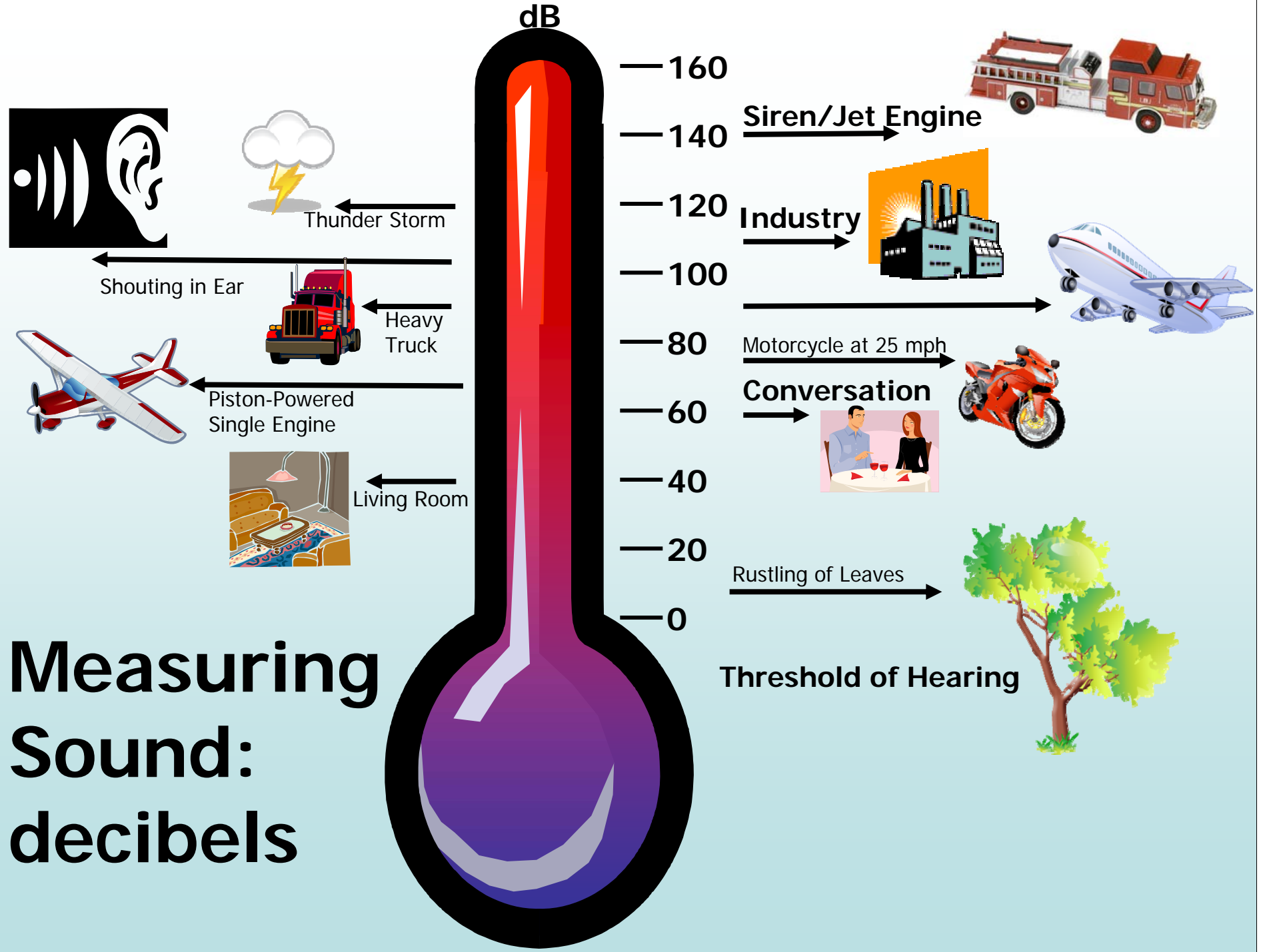
RESIDENTIAL SOUND INSULATION PROGRAM



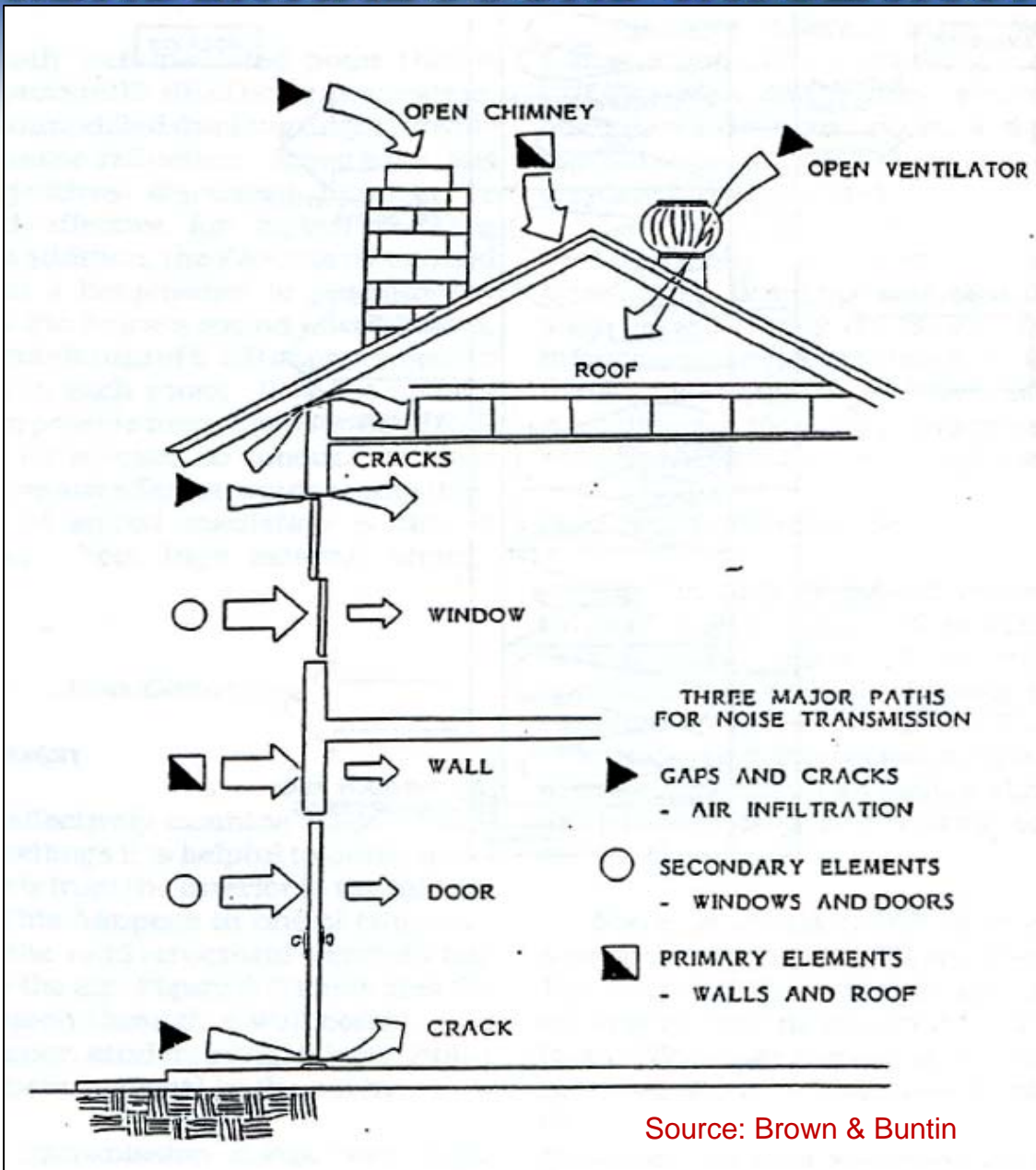
Program Update: **RSIP Goals**

- Promote Compatible Land Use for Homes Within the Noise Boundary
- Protect the Aviation Operating Environment
- Improve the Quality of Living Environment Around the Airport

Measuring Sound: decibels



RESIDENTIAL SOUND INSULATION PROGRAM



Information: How does Noise Enter a Home?

RESIDENTIAL SOUND INSULATION PROGRAM



RSIP: What is planned for my home? Noise Treatment

Noise Treatments that will be considered for *each* home individually:

- Materials:
 - Acoustically rated windows and doors
- Ventilation
 - Sealing of vent/chimney openings
 - New ventilation/air exchange
 - Air conditioning, if needed

RESIDENTIAL SOUND INSULATION PROGRAM



How Does the RSIP Work?

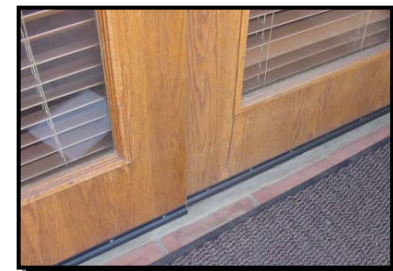
- Acoustical Exterior Wood Doors and/or Sliding Glass Doors



- Acoustical Windows



- Weather-Stripping Around Doors



RESIDENTIAL SOUND INSULATION PROGRAM



How Does the RSIP Work?

- Attic Insulation



- Acoustical Baffles for Vents



- Mechanical and Electrical Upgrades, Where Needed



RESIDENTIAL SOUND INSULATION PROGRAM



Typical Home Treatment



RESIDENTIAL SOUND INSULATION PROGRAM



RSIP Information: Funding

- 95% paid by FAA by Grants
- Current Grant – Treat 10 Homes and Startup
- Compete Annually for Grants
- Future Funding is NOT guaranteed and is appropriated each year

RESIDENTIAL SOUND INSULATION PROGRAM



RSIP Information:

Homeowner Requirements

- Sign Agreement(s)
- Grant an avigation easement onto your property
 - Right of aircraft to operate over your home
- Home visits
 - Noise Testing Visit
 - Assessment Visit
 - Construction Measurement Visit
 - Construction -Inconvenience and disruption, attempt to minimize but it will happen
 - Post Construction Noise Testing

RESIDENTIAL SOUND INSULATION PROGRAM



RSIP Information: **When?**

- Start-Up
- Pilot Project
 - 10-20 homes (sample of home stock) to be tested and designed for treatment
 - Beginning work, as soon as Policies for the program are confirmed with the FAA
- Phase I
 - Homes in the highest noise contour (noisiest)
 - Estimate 50-60 homes to be treated in year following Pilot Home Construction
- Subsequent Phases II-VI

RESIDENTIAL SOUND INSULATION PROGRAM

Contacts

www.gtfsound.com

Stelling Engineers, Inc.

406-452-8600

Email: rsip@stellinginc.com

